

# SafetyNet Firmware Upgrade Notes



## Abstract

This document will guide you to upgrade SafetyNet to version 1.01. It is vital that you follow the exact steps given in this document. Failure to do so may result in corrupted firmware loaded on to SafetyNet.

## Requirements for a successful upgrade

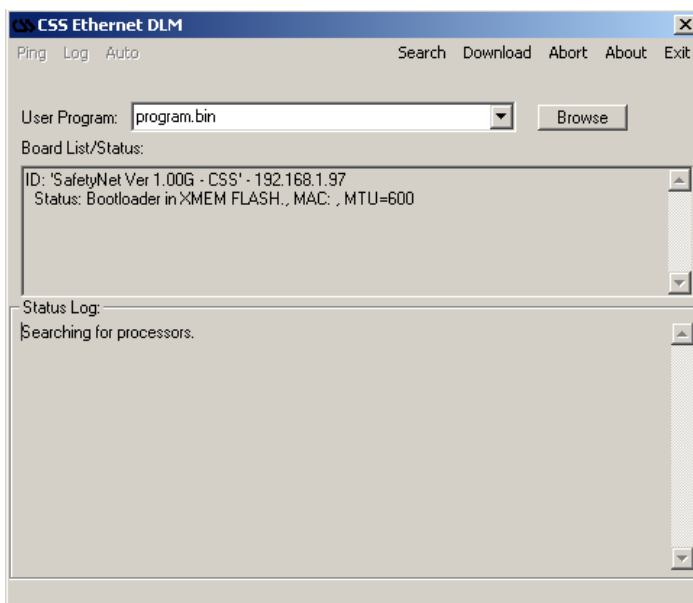
- Fully configured SafetyNet unit running software versions below 1.01.
- Know the IP address of the unit, and being able to communicate on UDP port 2000 and on port 30705.
- The tool “CSSEthernetDLM.exe” provided by Computer Support Systems. (Can be found in the tools directory of your product CD)
- Java enabled web browser. (Java™ 2 Runtime Environment, Standard Edition, Version 1.4.2 or higher)
- Given firmware file (\*.bin) by Computer Support Systems. (Included in your product upgrade CD or downloadable at CSS web site at <http://www.csspl.com.au/sitebody/downloads/firmware/index.html>)

## Upgrading Steps

### Notes:

- The product will have the default settings loaded to the unit if you choose to upgrade. The password will also be the default which is “password”
- Make sure that there are no active alarms present on SafetyNet and have your SafetyNet CD handy for registration keys.
- SafetyNet will reboot after the firmware is loaded, therefore relays would be turned off at boot up. Make sure that they would not affect your setup of relays.

1. Browse the SafetyNet upgrade CD and find the application listed as “CSSEthernetDLM.exe” under the tools directory. Double click to run this program.

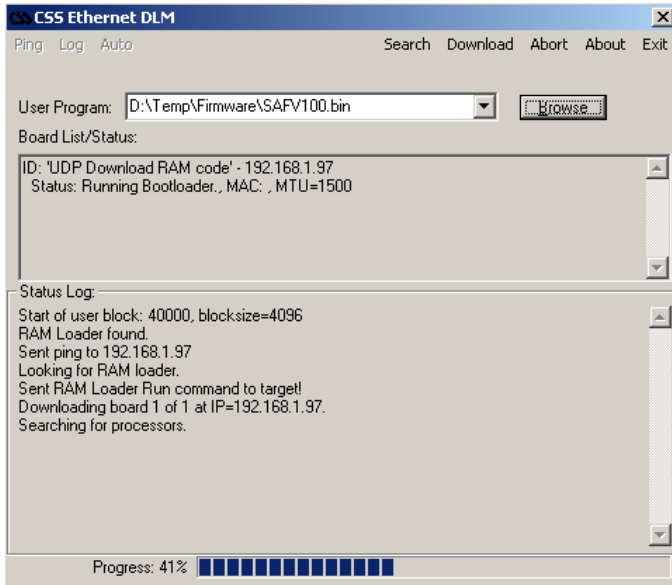


This program shows the version and the IP address of SafetyNet products on your network.

2. Click on the browse button and select the provided firmware file on the CD. The file would be a \*.bin file. The location of the file is E:\Firmware\\*.bin (E:\ is the CD drive letter)



- Now click on the Download button.  
In a few seconds, a progress bar will be active and indicate the loading of new firmware.



This will take about 30 - 45 seconds. Wait till its completed and a further few seconds. The text area for Board List/Status will now be update with your new firmware version.

- Open a new browser and go the following URL. <http://192.168.1.97/upgrade.html>  
(Replace the IP address with SafetyNet IP address)

## SafetyNet Firmware Upgrade Confirmation



- The webpage will prompt for the password. Once the password is entered click on “Confirm Firmware Upgrade”. A warning dialog box will be issued. Proceed carefully.
- If successful, a message is prompted and then directed back to the main menu.
  - SNMP users have to make sure to upgrade the CSS.MIB to the given MIB file on the upgrade CD pack.

### Important Tips

- Use the command “ping” to check that it is able to reach the unit once the upgrade is complete.
- Once upgraded, if the browser still loads up the old user interface, it could be due to the browser cache memory settings. Close and reopen the browser to get the latest user interface.